

VALENCIA VAL15

Product Specification Sheet



Product	Valencia
Model No.	VAL 15
Customer / Country	Australia

Ean Code
5 011139 114075

Rating Label	
Part Number	01/65657/0
Brand:	Dimplex
Wattage:	1570w - 1690w
Voltage:	230 - 240v / 50 Hz
Approval Marks:	C-Tick N16269 - V06750
Series:	C

Instruction Leaflet	
Part Number:	08/50018/3
Issue Number:	3
Brand:	Dimplex
Approval Marks	CE
Languages:	English
Additional Leaflets	
GD Australasia Warranty Card - 08/50510/0	

Components	
Element 2 x 700/750w	03/21919/0
Element Blower (51032)	03/21776/0
Geared Motor 15rpm (Chinese)	03/21592/0
Rotisserie	03/21711/0
Reflector Printed	21/62690/0
Lampholder & Adaptor x 3	03/21161/0
Candle Bulb x 3 60w E14 ses	03/21917/0
PCB - Infra-Red	03/21859/0
Fuel Effect Assembly	04/18139/0

Cord Set	
3 x 1.0mm ² Black (Aus) pvc - 03/20698/1	

Controls	
On/Off Switch	Arco x 1 - 03/21056/0
Inrush Switch	Arco x 2 - 03/21612/0

Colour Specifications	
Chassis:	Black
Surround	N/A
Front Outer Frame	Anthracite - 22/19873/1
Front Inner Frame	Silver - 22/19862/2
Switch Panel	Anthracite - 21/63546/1

Issue:	2	Date:	15/01/2008
Sign Off / Date:			
Customer:			
Marketing:			
R&D:			
Bitech:			
Quality Control:	Paul Flanagan		

Wiring Diagram	
Cam Nova - 00/11220/0 - Issue 6	

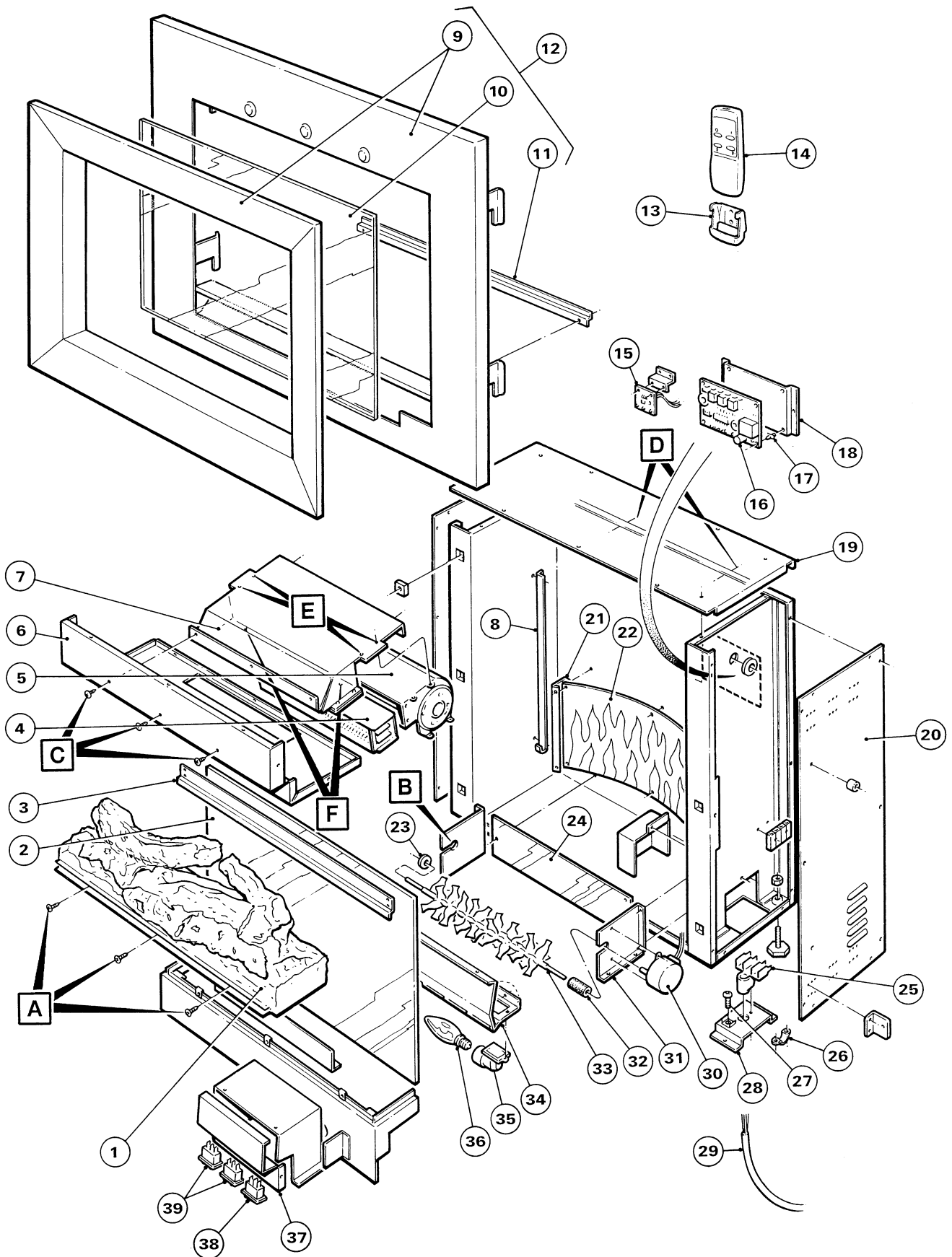
Badges / Labels	
Do not cover	Black on Clear 01/62152/0
Month / Year	x 1 - 01/63969/0
Switch Layout	x 1 - 01/63786/0
Lamp Replacement	x 1 - 01/60222/0
Fuel Effect Removal	x 1 - 08/19271/0
Contents Label	x 1 - 08/19506/0

Printing / Silk Screening	
Switch Markings	N/A
Brand / Logo	N/A

Accessories	
Wall Bracket:	N/A
Screw Pack:	03/22049/0
Spare Bulb:	N/A
Remote Control:	I/R 4 Button - 03/21862/0
Batteries:	x 2 - 03/21626/0
Coal Pack:	N/A
Pebbles:	N/A

Packaging	
Poly Bag	01/61942/0
Packaging Gross Weight	
Cardboard	4.2kg
Poly Bags	0.03kg
EPS	N/A

Carton	
Part Number:	08/19266/0
Labels	x 1 - 08/19356/0
Brand	Dimplex
Dimensions WxDxH	78 x 31 x 71
Weight	26.5kg
Approvals	C-Tick N16269 - V06750
Pallet Size / Quantity	1200x1000 / 8(2x4)



PARTS LIST**VALENCIA VAL15**

ITEM	CAT NO	WATTS	VOLTS	DESCRIPTION	COLOUR	MODEL
1	FP02035			HIGH INRUSH SWITCH		
2	BF7211			SWITCH		
3	FP05013			FUEL EFFECT		
4	FP9609			LAMPHOLDER		
5	FP03022	60		CANDLE LAMP		
6	FP05007			ROTISSERIE		
7	FP05006			MOTOR 10RPM		
8	FP05011			INNER GLASS		
N/S	FP05012			GLASS RETAINING BRACKET		
9	FP05005			FLAME PANEL		
10	FP05010	1500		ELEMENT ASSY		
11	FP03029			HEAT BLOWER MOTOR		
12	FP04039			PCB RECEIVER		
13	FP02033			PCB SUPPORT PILLAR		
14	FP04046			ACCESSORY PACK INC TRANSMITTER		
15	FP05016			SILVER TRIM		
16	FP05017			FRAME ASSY		
	FP05014			FRONT GLASS		

SERVICING AND DISMANTLING INSTRUCTIONS

ENSURE APPLIANCE IS DISCONNECTED FROM THE ELECTRICITY SUPPLY BEFORE DISMANTLING.
NOTE ALL CONNECTION DETAILS AND ROUTING OF LEADS BEFORE DISMANTLING.
ALWAYS REPLACE CABLE TIES ON RE-ASSEMBLY.

Numbers appearing in the text refer to those in the Illustrated parts list. Letters refer to locations.

CHAPTER 1. LAMP REPLACEMENT.

- 1.1. Grip the Front Panel assembly **12** firmly with a hand at each side, and pull forwards against the resistance of Six magnets, and then up and out towards you. Carefully place to one side.
- 1.2. Remove three countersunk screws in pos'n 'A' securing the Log effect **1**. Grip the front edge and slide it out towards you.
- 1.3. Grip the L.H. end of the flexibly mounted Rotisserie **33** and pull it forwards out of its location in pos'n 'B'. Slide the Grommet **23** off its shaft and keep it safe.
- 1.4. With the Rotisserie **33** still fixed to the Geared Motor **30** by the Flexible coupling **32**, swing it clear to allow access to defective Lamp **36**, which can now be unscrewed and replaced with a 240V 60W E14 SES Clear candle lamp.
- 1.5. Re-assemble in reverse order, ensuring that the bottom rear of the Log effect **1** locates beneath the bottom edge of the Mirrored glass **2**.

CHAPTER 2. LOG EFFECT.

- 2.1. Carry out procedures 1.1. 1.2. and 1.5 in CHAPTER 1.

CHAPTER 3. MAINS CABLE.

- 3.1. Carry out procedure 1.1. in CHAPTER 1. and remove the Fire from its normal location and lay it carefully on its back on a soft surface.
- 3.2. Remove the Cable clamp **26** secured by two screws to base of chassis.
- 3.3. Remove the Terminal access panel **28** secured by two screws to base of chassis.
- 3.4. Release the bright finish screw securing the Tri-clamp terminal block **25**, detach the Live and Neutral leads and the Earth lead from the Earth screw **27**. Withdraw the Cable **29** through Clamp **25** and replace with new cable.
- 3.5. Re-assemble in reverse order.

CHAPTER 4. FLAME EFFECT.

- 4.1. Carry out procedures 1.1. 1.2. 1.3. and 1.4. in CHAPTER 1.
- 4.2. Remove Rotisserie **33** by sliding shaft out of Flexible motor coupling **32**.
- 4.3. Mirrored glass **2** is retained at its top edge by Channel **3** which is secured to Chassis by four screws. Remove the screws, remove Channel, and carefully tilt top edge of glass outwards sufficient to lift it out of bottom retaining Channel **8**. Lay it carefully to one side, noting orientation.
- 4.4. **NOTE:** Further operations require that the Fire is removed from its normal location and placed on a stable surface.
- 4.5. To gain access to electrical connections, place the Fire in an upright pos'n and remove the R.H. Side panel **20**, secured by ten screws to Chassis.
- 4.6. The Geared motor **30** is secured by two Bright finish screws to its Mounting bracket **31**. It is not possible to release the screws without first detaching the Bracket from the Chassis. Proceed as follows, remove the two screws from the rear, securing the Bracket **31** to the Chassis, and lay the Fire on its back to remove two screws securing the Bracket to the base. Detach wiring from Terminal Connector and withdraw through Grommet. Pull Bracket **31** with Motor **30** attached, clear of Chassis and separate by removing the two Bright finish screws. Remove Flexible coupling **32** and re-use, if suitable on new Motor.
- 4.7. Reflective plate **24** is secured by two Rivets to rear of Chassis. To remove, stand Fire upright and drill rivets out from rear, on re-assembly, replace with M3.2 – 6.5mm Pop rivets.
- 4.8. To remove Lampholder **35**, first detach Mounting Bracket **34**, which is secured by two screws from rear of Chassis. The Bracket **34** needs to be hinged open to gain access to single screw securing Lampholder **35**. Remove screw and manoeuvre Lampholder downwards through aperture.
- 4.9. Flame effect reflector **22** is best removed with its Side brackets **21** x two, attached. With Fire in upright pos'n, remove four screws from rear of Chassis securing them, and likewise the two screws securing the Reflector. Remove the two screws securing each Side bracket **21** to Reflector **22**, and separate.
- 4.10. Re-assemble in reverse order.

CHAPTER 5. FAN HEATER & CONTROLS.

- 5.1. Carry out procedures 1.1, 1.2, and 1.3. in **CHAPTER 1** and 4.5. in **CHAPTER 4**.
- 5.2. Disconnect wiring from Control board **16**. Remove the LED indicator **15** secured by two screws to Mounting Bracket. Separate Control Board **16** from Mounting Bracket **18** by squeezing barbs on Stand-off spacers **17** x four.
- 5.3. To gain access to Element/Blower unit **4/5**, remove Top panel **19** secured by nine screws at the top and two at the L.H. side. Remove three screws in pos'n 'C', two in pos'n 'D', and lift out Mounting bracket **7** complete with Element/Blower unit **4/5**. Remove four screws in pos'n 'E' and two screws from underneath that pass through throat in Mounting bracket – shown ghosted in pos'n 'F', and slide unit out of throat.
- 5.4. Element **4**, complete with Thermal cut-out, is fixed to Blower **5** by two screws.
NOTE: On re-assembly ensure Element **4** is correctly located into throat on Mounting bracket **7**.
- 5.5. Switches **38,39** are a push fit into Control panel **37**. To remove, compress clip at each end of switch body and withdraw downwards.
- 5.6. Re-assemble in reverse order.

CHAPTER 6. MISCELLANEOUS.

- 6.1. The Glass window **10**, in the Front panel assembly **12**, can be replaced as follows. Carry out procedure 1.1. in **CHAPTER 1** and lay the assembly face down on a soft surface. Remove Retaining bracket **11** secured by two screws, and remove Glass **10**, if still in one piece. Replace with new Glass **10**, and secure Retaining bracket **11** with two screws.
NOTE: Always wear protective gloves, and if necessary, eye protection when removing/replacing glass.

AFTER SERVICING, IT IS RECOMMENDED THAT THE PRODUCT IS TESTED FOR INSULATION AND EARTH CONTINUITY, IN ACCORDANCE WITH RELEVANT LOCAL SAFETY REGULATIONS.